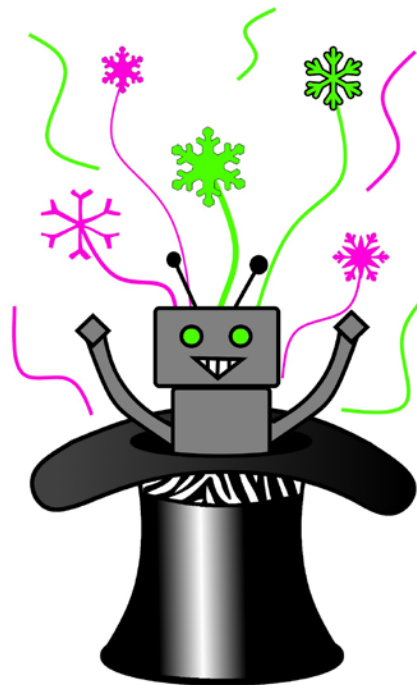


Magic Mayhem

- ❖ FIRST Tech Challenge Teams: *The MidKnight Magic* and *The MidKnight Magic Too!* welcome you to Magic Mayhem!
- ❖ We would like to thank the Millstone River School and NJ FTC for helping us host this event, as well as our outstanding sponsors and amazing volunteers.
- ❖ This is a full day full day FTC Meet, which means we will have qualifying and elimination games, as well as judged awards.

Date:	Sunday, January 17, 2016
Place:	75 Grovers Mill Road Plainsboro, NJ
Time:	8:00 AM-4:30 PM
Hosts:	The MidKnight Magic The MidKnight Magic Too



EVENT INFORMATION

Arrival: It is important that all teams show up on time and report to the check-in table immediately upon arrival. This will allow us to make the match schedule quickly. Please come 15 min ahead of the requested time to ensure that the competition runs smoothly. Please contact us at (847)-736-7474 if you cannot make it to the competition ASAP.

Early Arrival: If you are a team that is having trouble with your robot, please let us know and please plan to arrive by 8:00. We should have veteran team members available to help.

Drop-Off Area: Upon approaching the school, please look for Signs which will direct you toward to the Drop Off Area, in the back of the school. FTC teams can bring their materials and students through the back entrance before parking in the parking lot. Parking is ample and you cannot miss it.

Pit Area: Pits will be located in the forward school cafeteria area and along its outside perimeter. Look for your Team Number. The Pit Tables will have a sign to show your location for the day. Please stay within the boundaries of your pit and be kind to your neighbors. If you have large banners, displays, or posters, we can find a space somewhere else in the arena for these items. The Pit Areas should stay clear of obstructions to traffic and NO Team networks are allowed in the Pit.

Competition Area: The competition fields will be in the Gym. Please look for signs or ask one of the volunteers. The competition area has two fields will be used to support this event. The next- match queuing will be inside the gym.

Queuing: Per usual, Queuers will work with adult Lead Queuers to help teams to move to the Competition Area in time for matches. In order to keep the day flowing nicely, we will likely queue ~1-2 matches ahead and ask that those Drive Teams / Bots standby in Queuing Area.

Supplies: Be sure to bring a Utility Strip, Safety Glasses, Battery Chargers (marked with Team Number) and spare parts. The host team will have some items and tools available for your convenience.

Match Lists: Match Lists will be handed out ~9:45. The information will be available sooner if all teams are able to pass inspection earlier.

Gracious Professionalism: Please act in accordance with the guidelines of Gracious Professionalism. Ungracious behavior directed at referees or event volunteers will not be tolerated and will be grounds for disqualification from the event. Be kind to your referees, fellow teams, and help them as needed.

Robot Marking: Remember to have team numbers on the robot as per FTC Manual specifications. Make sure that your robot accommodates mounting of the Alliance Flag.

Lunch: Breakfast, lunch and snacks are available for purchase. A pre-order form is included in this packet. All pre-order forms & payments are due by 9:30 AM.

As with all of the events, we ask that teams support our hosts by purchasing their lunch on site and that no outside food or drinks be brought to the venue. If your team members simply have some pocket-money for lunch and snacks all will be just fine

FIRST AID: Please go to the Pit Administration table for basic First Aid Supplies. Please alert the event organizers if more involved care is required.

PIT SAFETY: Safety expectations and rules at the Magic Mayhem are the same as for all FIRST events. Please refer to the FIRST manual for those standards.

GENERAL SAFETY COMMUNICATIONS: Please notify an Event Crew member if you have any safety issues or concerns. Please report any illness or injuries to the Pit Administration table or event organizers.

GENERAL CONDUCT: Participants and volunteers are expected to behave with Gracious Professionalism at all times. Any unruly behavior or actions which create safety concerns may result in warnings or ejection from the site at the discretion of the organizers. Ungracious or threatening behavior directed at referees or event volunteers will not be tolerated and will be grounds for disqualification and ejection from the event.

Advancement & Judged Awards

AWARDS

1. Connect Award
 2. Motivate Award
 3. Innovate Award
 4. PTC Design award
- For Teams to be eligible for these awards they will need bring their Engineering Notebook with them to competition
 - Awards will be given at the end of the competition.

JUDGES

- All awards are judged awards. Judge Interviews will be conducted by Panels of 2-3 professionals from the community who have STEM and /or FIRST experience
- At Judging teams should bring their robot, notebook, and presenters.
- Appointment times will be announced several days before the competition and confirmed at the time of Team Check-In. They are non-negotiable.
- While it is very important to get your robot through Inspection, please give priority to the Judged Interview.
- Have your robot ready to go, closely review your judged interview time, and work robot inspection around it.
- Don't keep the Judges waiting!

ADVANCEMENTS

- During the Competition, winning the qualifying games (not Elimination) will give the winner 2 qualifying points.
- Ranking Points will be determined and updated as you progress throughout the tournament.
- Winning an award does NOT qualify a team for states; however, this is an official NJ FTC event and so the QP's and RP's that your team earns at *MidKnight Mayhem* do help your placement in the statewide standings.
- The top 48 teams in the NJ FTC Standings, not advanced by Qualifier, will be invited to the Meet Championships in February. So, your performance in the first 5 Matches do affect your possible advancement, along with being testaments of how good your team is.
- More information about Advancement Criteria can be found on www.NewJerseyFTC.com

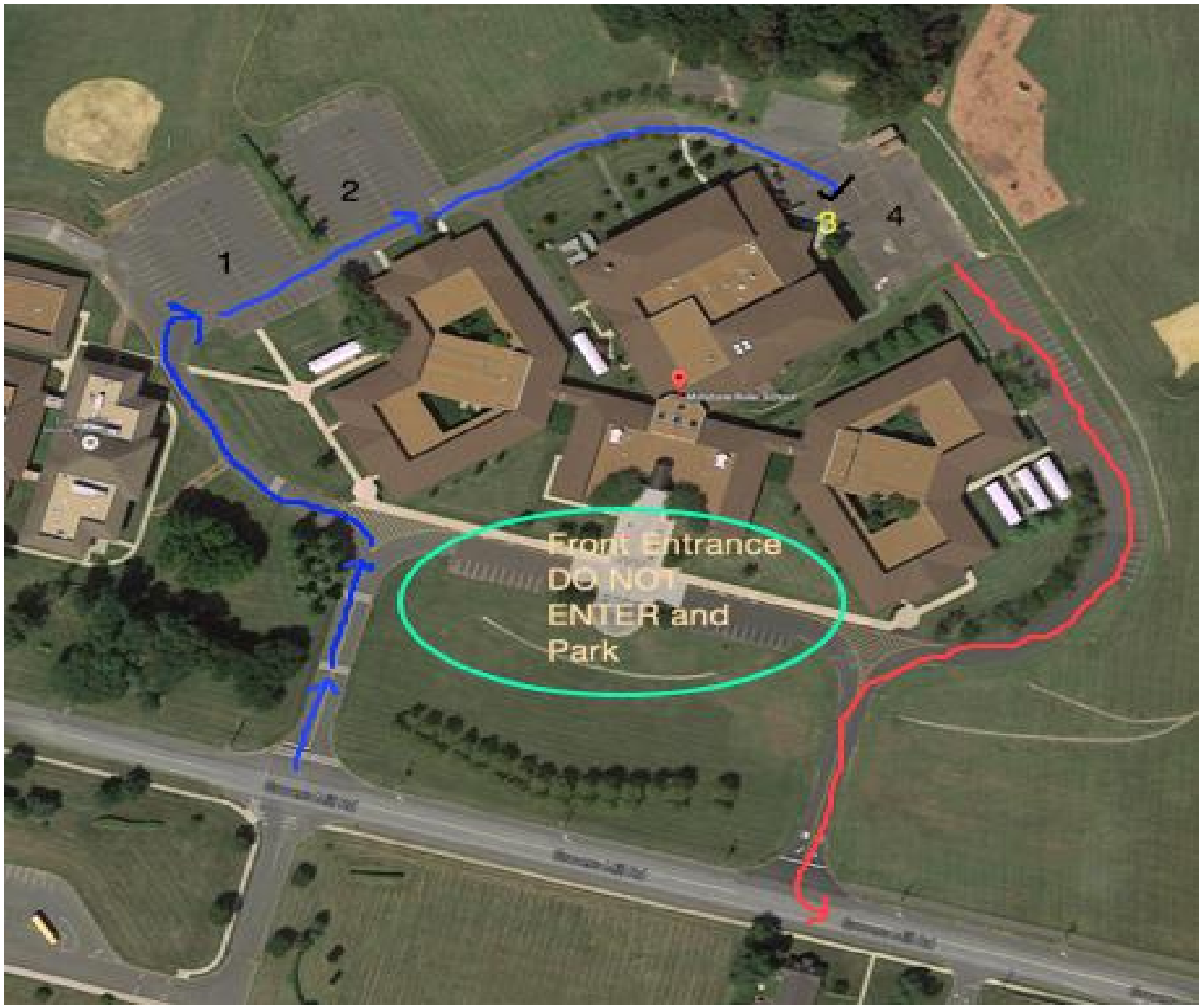
Magic Mayhem Meet - Schedule	
7:00 - 7:15	Arrival Time for Start-Up Volunteers
7:30 AM	All Volunteers On Site Early Arriving Teams
8:00 AM	Team Registration and Inspection Stations Fully Open
8:00 - 9:30	Mechanical & Software Inspection
8:30 AM	Judged Interviews Begin
9:45 AM	Match List Available
10:00 AM	Drivers Meeting
10:15 AM	Brief Opening Ceremony
10:15 AM	Start Qualifying Matches (24 Teams: 5 Matches Each) ~30 Matches to be Played [6 Minute Cycle Time]
	17 Matches accomplished before Lunch
12:00 PM	Lunch Break
12:30 PM	Start Final 13 Qualification Matches
1:45 PM	Qualifying Matches Over
2:00 PM	Alliance Selection
2:15 PM	Start SEMI-FINALS 6 Matches Used to Yield 2 Alliances from 4 [48 Minutes]
3:00 PM	Start FINALS 3 Matches Used to Yield the Winning Alliance [24 Minutes]
3:30 PM	Complete FINALS (2 Alliances - One Winning, One Finalist)
4:00 PM	Closing Ceremonies
4:15 PM	Tear Down / Event Complete

Magic Mayhem Competitors

(currently 21 Teams)

Team #	Team Name	Coach
3944	Team Mercury	Chris Gregory
4936	Sparks Robictics	Alicia Testa
5332	Cougar Cubs	Allan Tumolillo
5398	RoboTux	Sergio Martin
5406	Optimus Bees	Yasir Taskin
6508	Radioactive Raiders	Venkat Shan
8085	Technomancers	Mayra Bachrach
8439	Terror Bytes	Mayra Bachrach
8816	ML Robotitcs	Kim Deamer
9042	MidKnight Magic	Kathy Rogers
9927	MidKnight Magic Too	Kathy Rogers
9999	Ninejas	Alex Tashjian
10295	Yellow Jackets	Manoj Narayanan
10467	SciBots	Melissa Fox
10669	McNair HS JC	Manisha Shah
10788	ML Robotics II	Kim Deamer
10874	Lions	Marva Burke
10919	Fawkes Robotics	Mark Orciuoli
10920	Prototype Panthers	Heewon Yoon
10927	Bergen Bees	Edral Yilmaz
10928	Warren Tech Warriors	Samarah Jackson

MAP/Parking Information



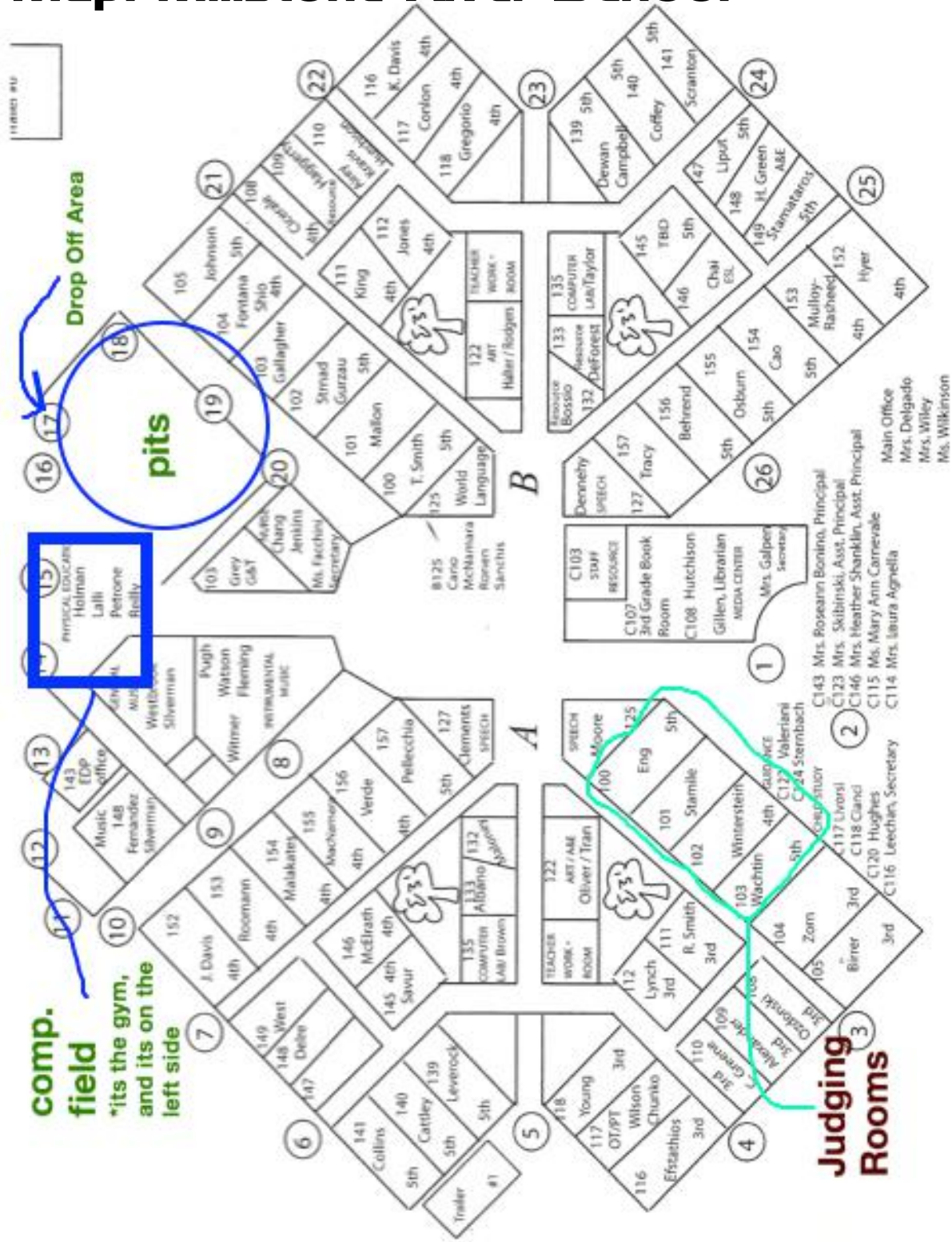
Blue Line: Entrance

Red Line: Exit

#3: Drop Off Area

Parking lots: 1, 2 ,4 (2 & 4 are the most convenient)

Map: Millstone River School



Pre-Order Form: Magic Mayhem

Make your selections from the following items and return this form with your registration fee. Pre-orders can also be made the day of the event up to 9:15 AM. **Many** additional items (vegetarian & non-vegetarian) will be available in the dining area. We can only accept **cash and checks** made out to WWP-HSN Robotics. No outside food/beverages should be brought into the venue.

Item	Price	Quantity	Total
Large Cheese Pizza (8 Slices)	\$14		
Large Pepperoni Pizza (8 slices)	\$15		
Sub Sandwich + Chips			
Italian	\$7		
Turkey	\$7		
Drinks (all plastic bottles)			
Coke	\$1		
Diet Coke	\$1		
Fanta (Orange Soda)	\$1		
Sprite	\$1		
Iced Tea	\$1		
Apple Juice	\$1		
Orange Juice	\$1		

TOTAL _____

TEAM #: _____

PAID (Check # or Cash): _____

Contact Name/ Cell Phone Number: _____