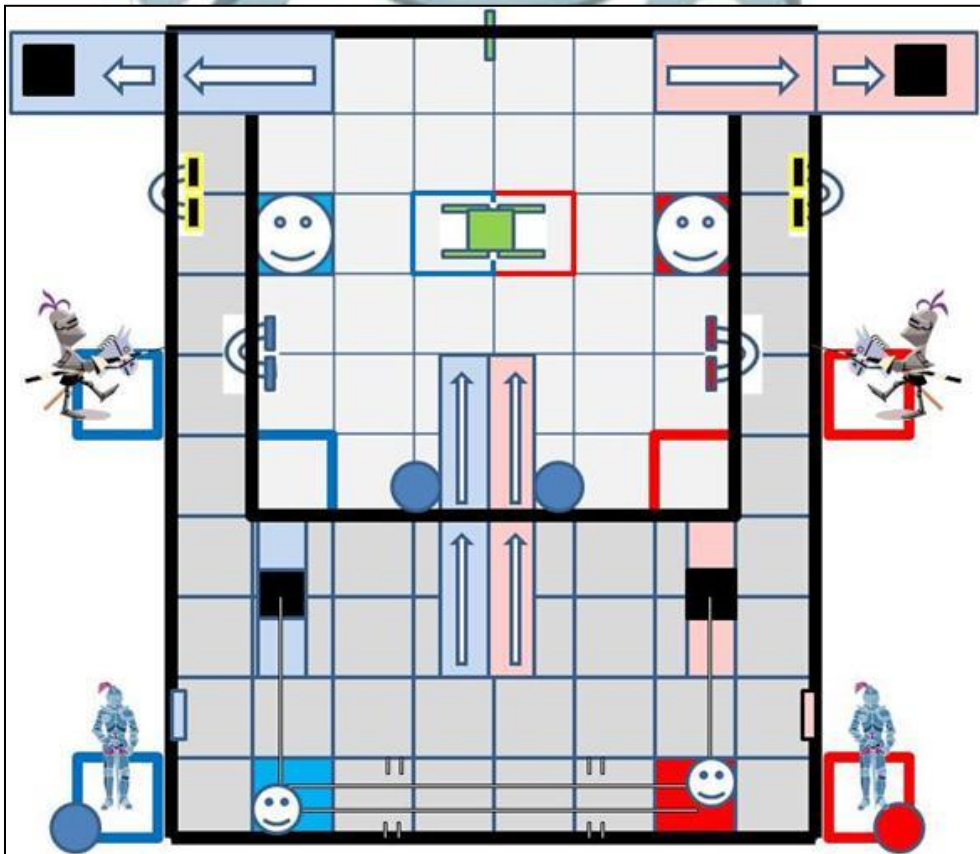
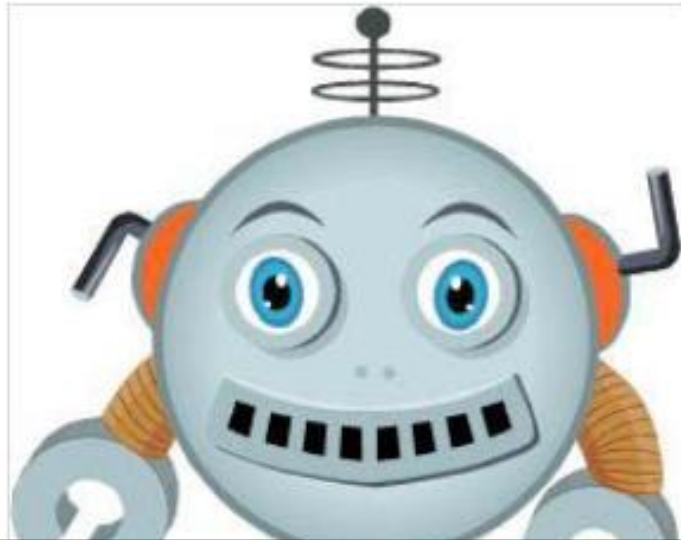


EVENT INFORMATION PACKET

Medford Moat Outreach Scrimmage

July 27, 2013



Medford Moat Outreach Scrimmage

WELCOME FROM *STORM* ROBOTICS

The *STORM* Robotics Team would like to welcome you to the Lenape Regional High School District.

The *STORM* Robotics Team consists of over 70 students, mentors, and parents who combine to make FRC2729, FTC4390, and the *STORM* Robotics Parent Booster Club.

If you have any questions or comments as the event rolls on, please feel free to find someone sporting the *STORM* logo and we'd be happy to talk. Good luck to all!



Lenape High School
235 Hartford Road
Medford, NJ 08055

1st Annual Medford Moat!

Outreach Scrimmage

- **First and foremost, we thank our gracious hosts, Storm Robotics and Lenape High School in Medford, NJ.**
- **We'd like to thank our volunteers and our mentoring teams who are coming to share the benefit of their knowledge and experience with our newest FTC teams and interested guests.**
- **Last but not least, THANKS to our new teams and guests. It is great to have you join us at the Medford Moat. You are demonstrating your interest in having a solid team this year, by investing your valuable summer time. We are delighted to have you with us.**

CONTENTS

- 1. Schedule for the Day**
- 2. Venue & General Information**
- 3. Detailed Event Information**
- 4. Driving Directions**
- 5. Local Points of Interest**



Event Start 9:00 am

Event End 3:00 pm

SCHEDULE FOR THE DAY

	Welcome	Coffee, Juices, Doughnuts as folks arrive, mingle and get settled.
9:00	Orientation	Powerpoint overview of FIRST Robotics, FTC and the Teams & Events in New Jersey.
9:15	FTC Team Discussion	Description of this year's official FIRST Game. Supporting FTC members describe the design of representative robots, how the game is played, and the season.
9:30	"Medford Moat" Game Discussion (Q&A)	Details of the event's competition will be described. Q&A period. Brainstorming.
9:45	Alliance Formation	Mentoring FTC members are partnered with the new (and future FTC team members) to create 2-robot Alliances
10:00	Robot Prep	Training robots (jersey-bots) are loaned to the competing Alliances. These robots can be modified with mechanisms to best play the Medford Moat. Veterans assist new people in making the necessary modifications.
11:00	Practice Time - Large Bots	Large FTC robots, owned by teams, have the opportunity to operate on the special Field to practice with the various elements.
11:30	Modify & Practice Time - Small Bots	Small training robots, loaned to teams, have the opportunity to operate on the Field.
12:00	Lunch	
12:30	Mini-Competition Kick Off	Teams reconvene in the Competition Area. Final questions are answered. Matches begin.
12:45	Competition - Phase 1	Matches are played. Every team competes in three matches and has a chance to play against every other Alliance.
1:45	Competition - Phase 2	Possible modifications to the Game Rules are announced and a second round of matches are played.
3:00	Closing and Awards	Event Awards given to the Winning Alliance. Photos for the event album. Closing remarks.
3:30	Event Complete	

VENUE & GENERAL INFORMATION

Supplies: If you are a mentoring team and hopefully bringing your robot, please be sure to bring a Utility Strip. Safety Glasses, Battery Chargers (marked with Team Number) and spare parts.

Arrival: Please try to arrive between 8:30 and 9:00am and report to the check-in table immediately upon arrival. This will allow us to promptly match up guests with veteran teams ..and start the progress. Please call 862-432-1526 if you are going to be late or if something unforeseen happens.

Pit Area: The Pits will be located in the school cafeteria area. We will place Alliance Partners into adjacent tables. There will another set of tables nearby on which can be found assorted Tetrix parts that can be shared for use on the loaner robots.

FIRST AID

Please go to the Pit Administration table for basic First Aid Supplies. Please alert the event organizers if more involved care is required.

GENERAL CONDUCT

Participants and volunteers are expected to behave with Gracious Professionalism at all times. Any unruly behavior or actions which create safety concerns may result in warnings or ejection from the site at the discretion of the organizers.

Ungracious or threatening behavior directed at referees or event volunteers will not be tolerated and will be grounds for disqualification and ejection from the event.

GENERAL SAFETY COMMUNICATIONS

Please notify an Event Crew member if you have any safety issues or concerns. Please report any illness or injuries to the Pit Administration table or event organizers.

FOOD: Our hosts, Storm Robotics, will have snacks available for arriving teams and guests. They will also handle lunch, taking food orders in the morning and having food brought into the venue at lunchtime. Please bring some pocket money for food . All prices will be very reasonable. Thanks, Storm!



DETAILED EVENT INFORMATION

FTC Demo: We will have information available on the official FIRST Game of 2012/2013 “Ring It Up”. The game will be described and mentoring teams with functioning tournament bots will demonstrate some of their scoring moves.

FTC Robot Review: Mentoring teams will also describe their robot design and how some of its features evolved over the year, with more experience playing “Ring It Up”

Competition Unveiling: The cover of this Information Packet includes a pictorial of the special game. More detail (e.g., specific game rules, point scoring, dimensions) will be available at the event. We’d really like to challenge the alliances with the details of the competition on July 27th so that both teams in the alliances work together to strategize and to ready the small bot.

Competition Overview: What clues can be gleaned from the pictorial? There is a traditional 12x12 FTC field in which the Ring It Up goal resides for scoring. It is surrounded by the Moat. A supply of scoring rings is available in the forward Moat region, where the tournament robots begin the Game. Special scoring rings are located in the back Moat region, where the smaller robots begin the Game. Note the narrow ramps for use by the small bots only. Those small bots are important!

Robot Readiness: It is intended that Mentoring Teams will assist their guests in preparing their Small Bot for the competition. A sample robot will be shown that uses a Mindstorms motor to create a small ring lift mechanism. It is expected that our alliances will much improve upon this design. We want the guests to do the hands-on work ...with advice and counsel from our veterans. Veterans are also asked to help with simple changes to programming, as needed (in RobotC).

Match Lists: We are often asked “when will Match Lists be available?”. For this event, we need to organize our Alliances first. The expectation for Match List availability is on or before 10:15.

Gracious Professionalism: Please act in accordance with the guidelines of Gracious Professionalism. Ungracious behavior directed at referees or event volunteers will not be tolerated and will be grounds for disqualification from the event. Be kind to your referees, fellow teams, and help them as needed.



DRIVING DIRECTIONS

Link to Lenape HS Webpage for directions from your location

<http://www.lrhhsd.org/Page/1218>

From Olga's Diner Route 70 and 73

Travel east on Route 70 approximately 4.5 miles. Turn left on Hartford Road just after Medport Diner. Lenape will be at the next intersection (Hartford and Church Roads). Take a left onto Church Road and you will see the main entrance to Lenape on the right.



Local Points of Interest

If you wish to explore the city of Philadelphia, no problem! It is located just 15 minutes away from this area and is conveniently accessible via Route 70, Route 38, or I-295 S via I-676. To learn more about Philadelphia tourist attractions and events, just visit <http://www.visitphilly.com/>.

- **Hyatt Place Mt Laurel**
8000 Crawford Place, Mount Laurel, NJ 08054
P: 866.539.8430
<http://mtlaurel.place.hyatt.com/>
- **The Westin Mount Laurel**
555 Fellowship Road, Mount Laurel, NJ 08054
P: 856.778.7300
<http://www.westin.com/mountlaurel>
- **Hampton Inn Philadelphia/Mt. Laurel**
5000 Crawford Place, Mount Laurel, NJ 08054
P: 856.778.5535
<http://hamptoninn.hilton.com/en/hp/hotels/index.jhtml?ctyhocn=PMLNJHX>
- **Courtyard Mount Laurel**
1000 Century Parkway, Mount Laurel, NJ 08054
P: 856.273.4400
<http://www.marriott.com/hotels/travel/phlml-courtyard-mt-laurel/>
- **Mount Laurel Marriott**
915 Route 73, Mount Laurel, NJ 08054
P: 856.234.7300
<http://www.marriott.com/hotels/travel/phlla-mt-laurel-marriott/>

HARDWARE, HOME IMPROVEMENT, AND ELECTRONICS

The Home Depot

1200 Nixon Drive, Mount Laurel, NJ 08054
P: 856.234.0880